

Operating Instructions For LaZee Mouse™ Switch

Thank You for purchasing the LaZee Mouse™ Switch! We hope you enjoy your purchase. We at LaZee Tek strive to build quality products, and want you to be completely satisfied. LaZee Tek technical support is available at (260) 705-0071.

System Requirements

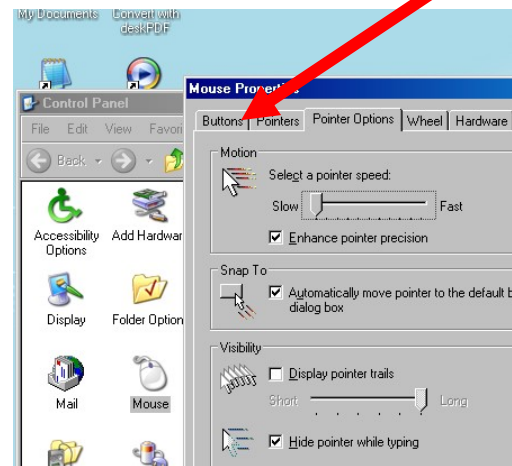
Hardware: Available USB port

- Software:** - Microsoft Windows™ XP - Win 10
Including 8 RT & Surface
- OSX™ 10.2 or above
 - Android 4.4 or above
 - Unix™ / Linux / Other
utilizing standardized HID drivers

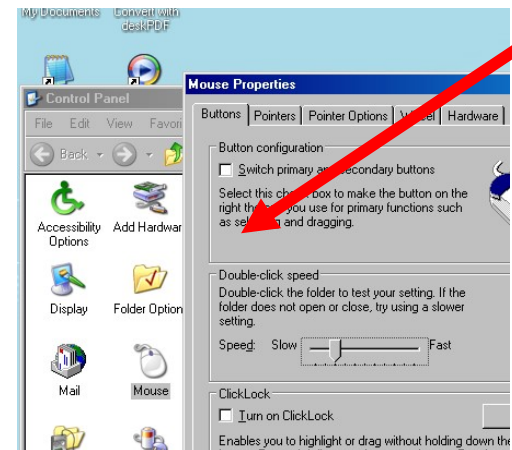
Setup Instructions

1. Begin with unpacking the LaZee Mouse™ package. Inside you should find:
 - a. LaZee Mouse™ Switch
 - b. Headset
 - c. USB Cable
 - d. USB Extension
 - e. Standard Mounting Kit
 - f. Operating & Mounting Instructions
(no switches are included)
2. Connecting the two cables to the LaZee Mouse™ Switch consists of:
 - a. Connecting switch(es) to the 3.5mm input jack on the LaZee Mouse™ Switch. LaZee Tek products use standard 1/8" / 3.5 mm jacks. If your switch has a different size plug, standard adapters are readily available from numerous electronic and department stores.
 - b. Inserting the Mini-B end of the USB cable into the LaZee Mouse™ USB port.
3. For new users, it is recommended to reduce the mouse speed settings of the computer, to a maximum cursor travel speed of 5 sec from Left

to Right side of display. After the user has become “familiar” with operating the LaZee Mouse™ at the slower speed settings, they can be gradually increased. The menu for adjusting the mouse speed can be found at:



It is also recommended to reduce the double-click speed. The menu for reducing the double-click speed can be found at:



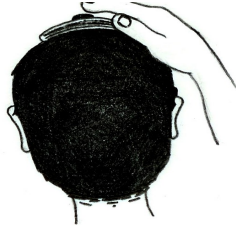
With the LaZee Mouse™ resting undisturbed on a table, plug other end of USB cable into the computer's USB port. (It is OK to plug this in while the computer is powered ON)

4. The first time the LaZee Mouse™ is connected to a computer system, Windows will detect new hardware & recognize the LaZee Mouse™ as a “Human Interface Device”, briefly displaying a pop-up window stating such. After another windows menu shows new hardware is ready for use, proceed to step 6.

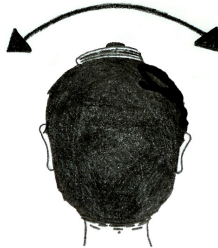
Operating Instructions

- Place unit on top of head, or other desired location. The LaZee Mouse™ is designed such that its connectors must be oriented toward the right. Position yourself in a comfortable position where no cursor movement is desired.

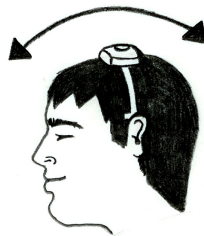
- While holding steady in this position, gently press and release the set button located on top of the LaZee-Mouse. This is what sets the LaZee Mouse™ “home position”. The home position is where the user returns to when no cursor movement is desired.



- Imagine the head as a joystick, which controls cursor movement. Tilt the head slowly to the right (moving the ear towards the shoulder) until the computer’s cursor moves to the right. Tilt the head farther to the right and the cursor will move faster. Return the head to the upright position and the cursor will stop moving



- Tilting the head back (looking up) moves the cursor up, tilting the head forward (looking down) moves the cursor down. Tilting the head two directions at once moves the cursor diagonally.



- The LaZee Mouse™ Switch accepts inputs from one or two external switches, and uses them to perform click and drag functions. Clicking is performed real time as controlled via the external switches. Two independent switches need not be the same type, and need to provide a contact closure for activation.

- The LaZee Mouse™ Switch provides two operating modes. This allows the user to select the best clicking options. The operating mode is controlled via a DIP switch on the bottom of unit. Setting DIP switch toward outside of unit selects Mode 0, toward the inside selects Mode 1.

- Mode 0 Single Switch Operation** can use either a mono or stereo plug.
 - Quick closure produces left click
 - Long closure produces right click
 - Extended closure produces a right drag function.
- Mode 1 Dual Switch Operation** must be used with a stereo plug. (one or two separate switches can be connected with an adapter (TASH CA-1).)
 - Switch A - Quick closure produces left click
 - Switch A - Extended closure produces a left drag function.
 - Switch B - Quick closure produces right click
 - Switch B - Extended closure produces a right drag function.

Note:

Using a single switch with mono plug & no adapter in Mode 1, will force Right Click active.

- Feedback LEDs are provided for user training and/or troubleshooting. As a left or right click is detected, the appropriate LED will blink, indicating which click has been recognized and sent to the host computer.



- For support contact (260) 705-0071 or support@lazeetek.com

- WEEE Take Back Program
To support the environment, LaZee Tek takes our products back directly from customers. Contact us for details or visit: www.lazeetek.com/html/weee/html

