

Operating Instructions For LaZee Mouse™ Pro

Thank You for purchasing the LaZee Mouse™ Pro!
We hope you enjoy your purchase. We at LaZee Tek strive to build quality products, and want you to be completely satisfied.

System Requirements

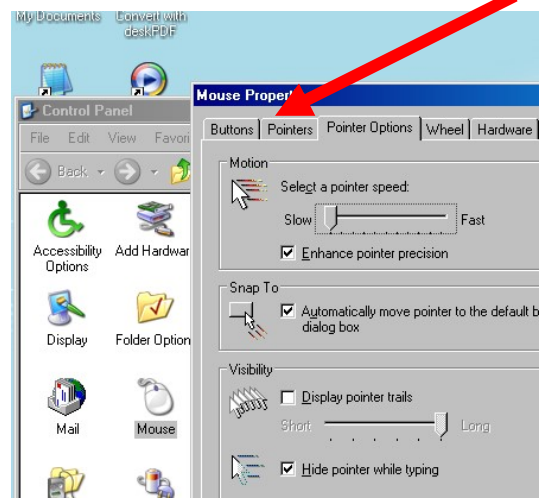
Hardware: Available powered USB port

- Software:** - Microsoft Windows™
XP, Vista, 7, 8, 8RT & 10
- OSX™ 8.0 or above
- Unix™ / Linux any w/ HID drivers

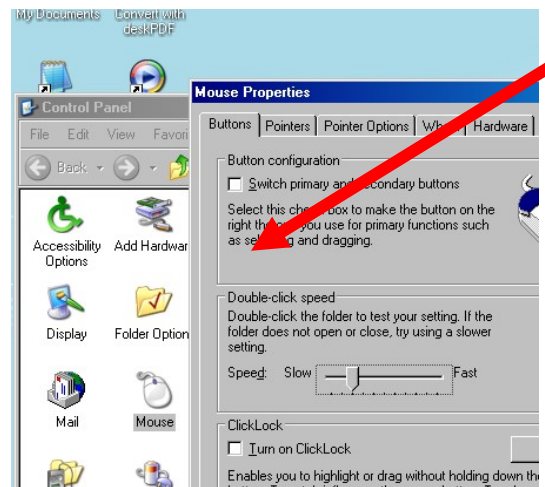
Setup Instructions

1. Begin with unpacking the LaZee Mouse™ package. Inside you should find:
 - a. LaZee Mouse™ Pro
 - b. Headset with Microphone
 - c. USB Cable
 - d. USB Extension Cable
 - e. Standard Mounting Kit
 - f. Operating & Mounting Instructions
2. Connecting the two cables to the LaZee Mouse™ Pro consists of:
 - a. Insert the microphone plug into the 3.5mm input jack on the LaZee Mouse™ Pro. LaZee Tek products use standard 1/8" jacks. If your mic has a different size plug, standard adapters are readily available from numerous electronic and office stores.
 - b. Insert the small end of the USB cable into the LaZee Mouse™ USB port.
3. For new users, It's recommended to reduce the mouse speed settings, to a maximum cursor travel speed of 5 sec from Left to Right side of display. New users should reduce the mouse speed settings of the computer. While reducing the mouse speed settings is recommended, it is not a

requirement. After the user has become "familiar" with operating the LaZee Mouse™ at the slower speed settings, they can be gradually increased. The menu for adjusting the mouse speed can be found at:



It is also advisable to reduce the double-click speed. The menu for reducing the double-click speed can be found at:

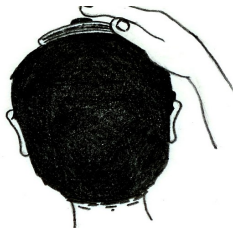


4. With the LaZee Mouse™ resting undisturbed on a table, plug other end of USB cable into the computer's USB port. (It is OK to plug this in while the computer is powered ON)
5. The first time LaZee Mouse™ is connected to a computer system, Windows will detect new hardware & recognize LaZee Mouse™ as a "Human Interface Device". After next windows menu shows "New hardware is ready for use", proceed to step 6.

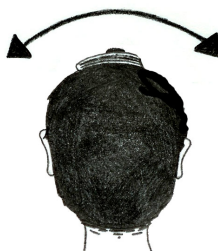
Operating Instructions

6. Place unit on top of head, or other desired location. The LaZee Mouse™ is designed such that its connectors must be oriented toward the right. Position yourself in a comfortable position where no cursor movement is desired.

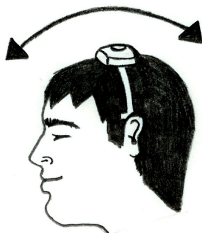
7. While holding steady in this position, gently press and release the set button located on top of the LaZee-Mouse. This is what sets the LaZee Mouse™ “home”. Home is where the user returns to when no cursor movement is desired.



8. Imagine the head as a joystick, which controls cursor movement. Tilt the head slowly to the right (moving the ear towards the shoulder) until the computer's cursor moves to the right. Tilt the head farther to the right and the cursor will move faster. Return the head to the upright position and the cursor will stop moving

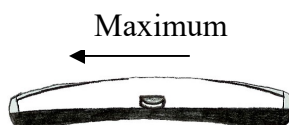


9. Tilting the head back (looking up) moves the cursor up, tilting the head forward (looking down) moves the cursor down. Tilting the head two directions at once moves the cursor diagonally.



10. The LaZee Mouse™ Pro detects audio sounds via microphone, and uses them to perform click and drag functions. Spoken words, whistling, blowing, or puffing into the microphone can all be utilized to achieve the desired effect. It is completely up to the user what method to use; however, the most efficient and quietest method is to blow a puff of air, as you would if you were attempting to blow out candles.

11. The microphone gain control will need to be adjusted to your environment. The



higher the gain setting, the more sensitive the microphone is. In a quiet environment, the gain may be set to maximum. This allows the least amount of sound to achieve the desired clicking activity. As the gain is reduced, more sound is needed for the LaZee Mouse™ Pro to recognize the click commands. With the gain set to minimum, no amount of sounds will trigger click commands, as the microphone circuit is disabled. A higher gain setting, while able to detect soft puffs or air, can be more susceptible to unwanted background noises.

12. Practicing with clicking and dragging is highly recommended. Position the LEDs towards the user. Move the mouse to a clear



desktop area. Clicks can be attempted by puffing into the microphone. As a left or right click is detected, the appropriate LED will blink, indicating which click has been recognized and sent to the host computer.

13. The LaZee Mouse™ Pro provides two operating modes. This allows the user to select the best clicking options. The operating mode is controlled via a DIP switch on the bottom of unit. Setting DIP switch toward outside of unit selects Mode 0, toward the inside selects Mode 1.

Mode 0 .

Single quick sound = **left** click
 Single long sound = **right** click
 Extended long sound = **right** drag

Mode 1

Single quick sound = **left** click
 Extended long sound = **left** drag
Right click or drag not available

14. For support contact us: 260 705-0071
 email: support@lazeetek.com
 web: www.lazeetek.com

15. WEEE Take Back Program To support the environment, LaZee Tek takes our products back directly from customers. Contact us for details or visit: www.lazeetek.com/html/weee/html

